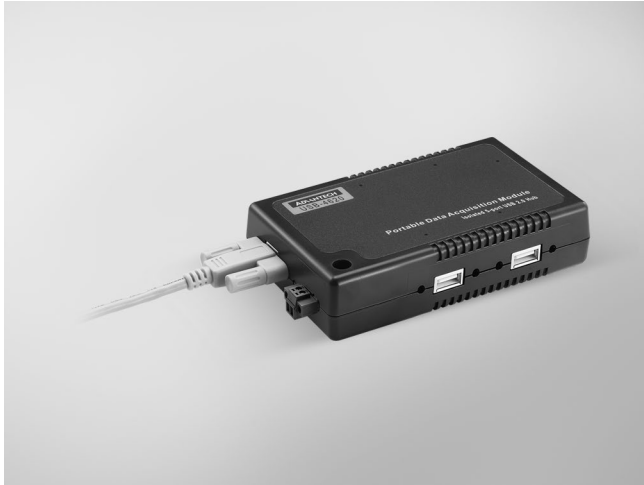


USB-4620

USB-4622

5-port Full-speed Isolated USB 2.0 Hub

5-port High-speed USB 2.0 Hub



USB-4620

CE FCC RoHS



USB-4622

CE FCC RoHS

Features

- 5 downstream USB 2.0 ports
- Compatible with USB 2.0 Full-speed
- 3,000 V_{DC} voltage isolation for each downstream port
- Suitable for DIN-rail mounting
- One lockable USB cable included
- 10 ~ 30 V_{DC} power input (power adapter not included*)

Specifications

Connectivity

- **Ports** Upstream x 1 (Type B) Downstream x 5 (Type A)
- **Compatibility** USB 2.0 Full-speed
- **Transfer Speed** 12 Mbps
- **Supply Current** 500 mA max. per channel

General

- **Housing** Plastic (ABS+PC)
- **Dimensions (L x W x H)** 132 x 80 x 32 mm (5.2" x 3.15" x 1.26")
- **DC Input** 10 ~ 30 V_{DC}
- **Power Consumption** 24 V @ 36 mA
- **Operating Temperature** 0 ~ 60°C (32 ~ 140°F)
- **Storage Temperature** -20 ~ 70°C (-4 ~ 158°F)
- **Storage Humidity** 5 ~ 95% RH non-condensing

Protection

- **Isolation Protection** 3,000 V_{DC}

Ordering Information

- **USB-4620-AE** 5-port Full-speed Isolated USB 2.0 Hub

Accessories

- **PWR-242-AE** DIN-rail Power Supply
- **1960004544** Wallmount Bracket
- **1960005788** VESA Mount Bracket
- **USB-LOCKCABLE-AE** 1.8 M Lockable USB 2.0 Cable with Screw Kit

Features

- 5 downstream USB 2.0 ports
- Compatible with USB 2.0 High-speed, USB 2.0 Full-speed, USB 1.0
- 480 Mbps high-speed data transfer
- LED indicator
- Suitable for DIN-rail mounting
- One lockable USB cable included
- 10 ~ 30 V_{DC} power input (power adapter not included*)

Specifications

Connectivity

- **Ports** Upstream x 1 (Type B) Downstream x 5 (Type A)
- **Compatibility** USB 2.0 High-speed, USB 2.0 Full-speed, USB 1.0
- **Transfer Speed** 480 Mbps/12 Mbps/1.5 Mbps
- **Supply Current** 500 mA max. per channel

General

- **Housing** Plastic (ABS+PC)
- **Dimensions (L x W x H)** 132 x 80 x 32 mm (5.2" x 3.15" x 1.26")
- **DC Input** 10 ~ 30 V_{DC}
- **Power Consumption** 24 V @ 36 mA
- **Operating Temperature** 0 ~ 60°C (32 ~ 140°F)
- **Storage Temperature** -20 ~ 70°C (-4 ~ 158°F)
- **Storage Humidity** 5 ~ 95% RH non-condensing

Ordering Information

- **USB-4622-BE** 5-port High-speed USB 2.0 Hub

Accessories

- **PWR-242-AE** DIN-rail Power Supply
- **1960004544** Wallmount Bracket
- **1960005788** VESA Mount Bracket
- **USB-LOCKCABLE-AE** 1.8 M Lockable USB 2.0 Cable with Screw Kit