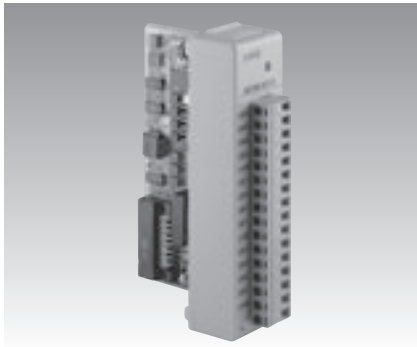


ADAM-5013 ADAM-5017 ADAM-5017P

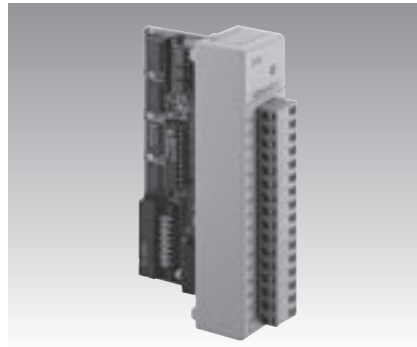
3-ch RTD Input Module

8-ch Analog Input Module

8-ch Analog Input Module with Independent Input Range



ADAM-5013



ADAM-5017



NEW

ADAM-5017P



Specifications

General

- **Certifications** CE
- **Connectors** 1 x Plug-in screw terminal (# 14-22 AWG)
- **Power Consumption** 1.1 W (max.)

RTD Input

- **Accuracy** $\pm 0.1\%$ or better
- **Bandwidth** 13.1 Hz @ 50 Hz
15.72 Hz @ 60 Hz
- **Channels** 3
- **CMR @ 50/60 Hz** 150 dB
- **Input Connections** 2, 3 or 4 wire
- **Input Impedance** 2 M Ω
- **Input Type** PT100 or Ni RTD
- **NMR @ 50/60 Hz** 100 dB
- **Resolution** 16-bit

RTD Types and Temperature Ranges

IEC RTD 100 ohms

Pt	-100° C	to	+100° C	a=0.00385
Pt	0° C	to	+100° C	a=0.00385
Pt	0° C	to	+200° C	a=0.00385
Pt	0° C	to	+600° C	a=0.00385

JIS RTD 100 ohms

Pt	-100° C	to	+100° C	a=0.00392
Pt	0° C	to	+100° C	a=0.00392
Pt	0° C	to	+200° C	a=0.00392
Pt	0° C	to	+600° C	a=0.00392

Ni RTD

Ni	-80° C	to	+100° C
Ni	0° C	to	+100° C

- **Sampling Rate** 10 samples/sec. (total)
- **Span Drift** $\pm 0.01^\circ \text{C}/^\circ \text{C}$
- **Zero Drift** $\pm 0.015^\circ \text{C}/^\circ \text{C}$

Protection

- **Isolation Voltage** 3000 V_{DC}

Ordering Information

- **ADAM-5013** 3-ch RTD Input Module

Specifications

General

- **Certifications** CE, FM
- **Connectors** 1 x Plug-in screw terminal (# 14-22 AWG)
- **Power Consumption** 1.25 W (max.)

Analog Input

- **Accuracy** $\pm 0.1\%$ or better
- **Bandwidth** 13.1 Hz @ 50 Hz
15.72 Hz @ 60 Hz
- **Channels** 8 differential
- **CMR @ 50/60 Hz** 92 dB min.
- **Input Impedance** Voltage: 2 M Ω
Current: 120 Ω (Build-in 120 Ω register for Current input)
- **Input Type** mV, V, mA
- **Input Range** $\pm 150 \text{ mV}$, $\pm 500 \text{ mV}$, $\pm 1 \text{ V}$, $\pm 5 \text{ V}$, $\pm 10 \text{ V}$; $\pm 20 \text{ mA}$
16-bit
- **Resolution** 16-bit
- **Sampling Rate** 10 samples/sec. (total)
- **Span Drift** $\pm 25 \text{ PPM}/^\circ \text{C}$
- **Zero Drift** $\pm 6 \mu\text{V}/^\circ \text{C}$

Protection

- **Isolation Voltage** 3000 V_{DC}
- **Fault and Overvoltage Protection** Withstands overvoltage up to $\pm 35 \text{ V}$

Note: The voltage difference between any two pins must not exceed $\pm 15 \text{ V}$

Ordering Information

- **ADAM-5017** 8-ch Analog Input Module

Specifications

General

- **Certifications** CE
- **Connectors** 1 x Plug-in terminal block (#14 ~ 22 AWG)
- **Power Consumption** 1.25 W (max.)

Analog Input

- **Accuracy** Voltage mode : $\pm 0.1\%$ or better
Current mode : $\pm 0.2\%$ or better
- **Channels** 8 differential and independent configuration channels
92 dB min.
- **CMR @ 50/60 Hz** 92 dB min.
- **Input Impedance** Voltage: 20 M Ω
Current: 120 Ω (Build-in 120 Ω . register for Current Input) for Current Input)
- **Input Type** mV, V (supports uni-polar and bipolar), mA
- **Input Range** 0 ~ 150 mV, 0 ~ 500 mV, 0 ~ 1 V, 0 ~ 5 V, 0 ~ 10 V, 0 ~ 15 V, $\pm 150 \text{ mV}$, $\pm 500 \text{ mV}$, $\pm 1 \text{ V}$, $\pm 5 \text{ V}$, $\pm 10 \text{ V}$, $\pm 15 \text{ V}$, $\pm 20 \text{ mA}$, 4 ~ 20 mA
- **Resolution** 16 bits
- **Sampling Rate** 10 samples/sec
- **Span Drift** $\pm 25 \text{ ppm}/^\circ \text{C}$
- **Zero Drift** $\pm 6 \mu\text{V}/^\circ \text{C}$
- **High Common Mode** 200 V_{DC}

Protection

- **Over Voltage Protection** $\pm 60 \text{ V}_{DC}$
- **Built-inTVS/ESD Protection**

Ordering Information

- **ADAM-5017P** 8-ch Analog Input Module with Independent Input Range