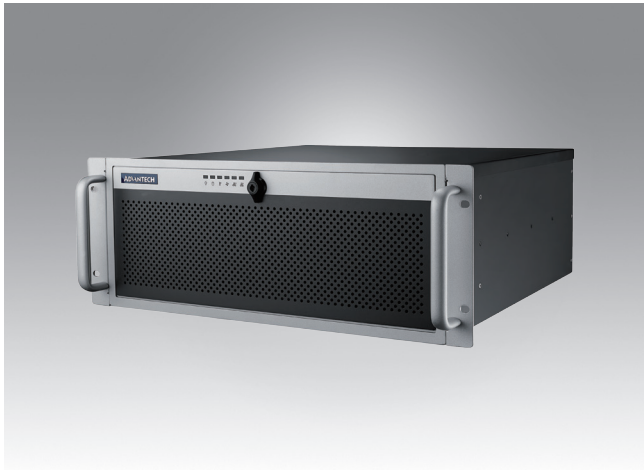


ACP-4340

4U Rackmount Chassis for Full-size SHB/SBC or ATX/MicroATX Motherboard with 4 Hot Swap Drive Trays



Features

- Supports a PICMG backplane with up to 14 slots or an ATX/Micro-ATX motherboard
- Shock-resistant disk drive bay holds four hot-swap 3.5" and 2.5" SAS/SATA disk trays, one slim optical disk drive, and one 2.5" internal drive
- Dual front USB 3.0 ports
- Front-accessible system fan without opening top cover for easy maintenance
- LED indicators and alarm notification for system fault detection
- Smart fan speed control
- Built-in Intrusion switch function
- Built-in Intelligent System Module enabling whole system fan control and remote manageability

Quiet

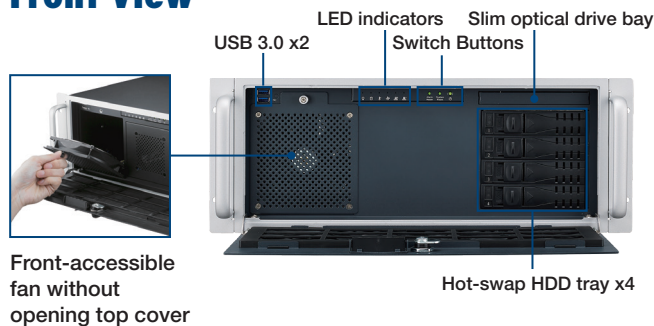
CE FCC

Specifications

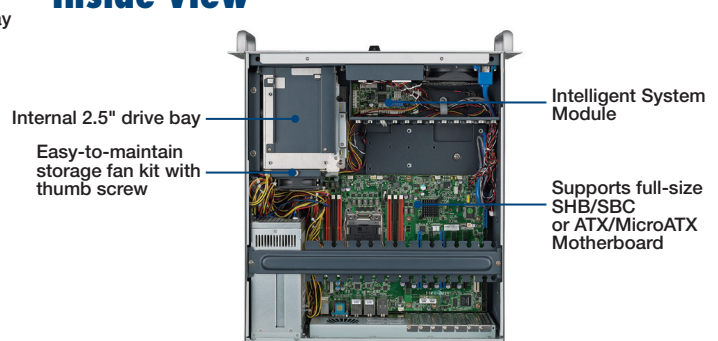
		External	Internal
Drive Bay	Slim Optical Drive Bay	1	-
	3.5" Drive Bay	-	-
	2.5" Drive Bay	-	1
	Hot Swap	4	-
Cooling	Fan	1 (12 cm /74 CFM) + 1 (8 cm/56 CFM) for SAS/SATA storage unit	
	Air Filter	Yes	
Front I/O Interface	USB 3.0*	2	
	LED Indicators	Power, HDD, temperature, fan, LAN1, and LAN2	
Miscellaneous	Rear Panel	Backplane version: One 9-pin D-Sub opening Motherboard version: Five 9-pin D-Sub and one 68-pin SCSI openings	
	System Monitoring	Chassis intrusion switch	
Intelligent System Module Remote Monitoring	CPU/System fan speed, CPU/system temperature, motherboard voltage (Only selected Advantech MBs/CPU cards with SUSIAccess installed can fully enable these functions, check with Advantech local rep. for detailed information.)		
Environment	Temperature	Operating 0 ~ 40 °C (32 ~ 104 °F)	Non-Operating -40 ~ 70 °C (-40 ~ 156 °F)
	Humidity	10 ~ 85% @ 40 °C, non-condensing	
	Vibration (5 ~ 500 Hz)	1 Grms	2 G
	Shock	10 G (with 11 ms duration, half sine wave)	
Physical Characteristics	Dimensions (W x H x D)	482 x 177 x 479 mm (19" x 7.0" x 18.8")	
	Weight	12.5 kg (27.5 lb)	

* The USB ports do not operate normally if a main board with USB 2.0 internal connector only is installed.

Front View



Inside View



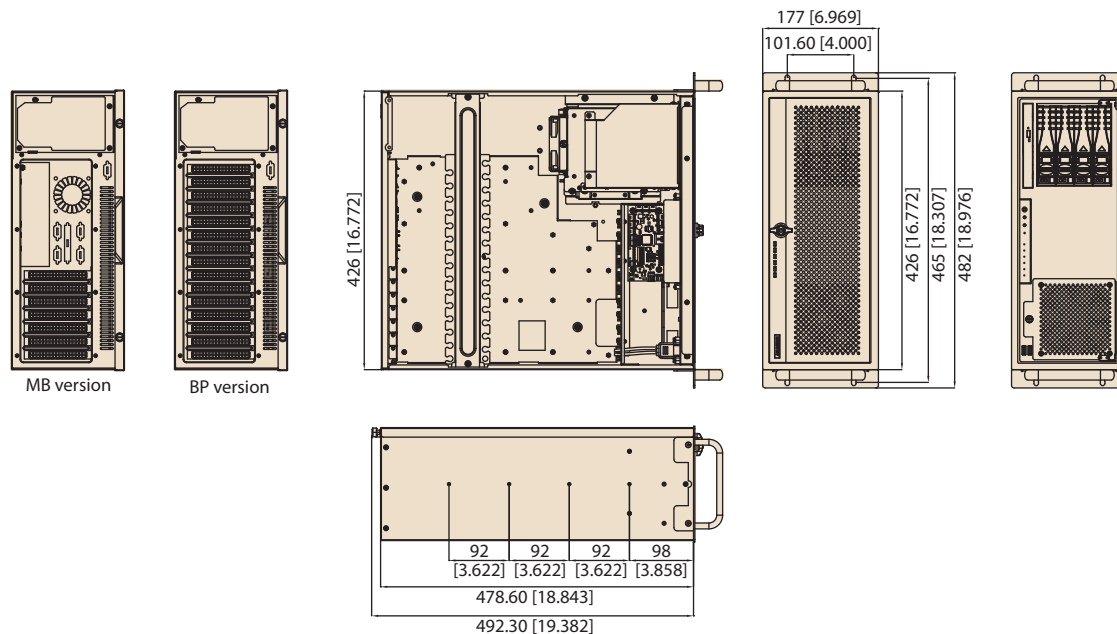
Rear View



*Note: Backplane, SBC, motherboard, and power supply are not included.

Dimensions

Unit: mm [inch]



Ordering Information

Part Number	Power Supply	Wattage	Switch type
Backplane Version			
ACP-4340BP-00XE	-	-	ATX
ACP-4340BP-40XE	96PS-A400WPS2	400W	ATX
Mother board Version			
ACP-4340MB-00XE	-	-	ATX
ACP-4340MB-40ZE	96PS-A400WPS2	400W	ATX

Power Supply Options

Part Number	80 Plus Grade	Watts	Type	Input
PS8-400ATX-ZE	Bronze	400W	Single	AC 100 ~ 240 V (full range)
PS8-500ATX-ZE	Bronze	500W	Single	AC 100 ~ 240 V (full range)
PS8-700ATX-ZE	Bronze	700W	Single	AC 100 ~ 240 V (full range)
RPS8-500ATX-XE	Bronze	500W	1+1 Redundant	AC 100 ~ 240 V (full range)

Optional Accessories

Part Number	Description
96CB-SATAPOWER-6P1	SATA power wire 6-pin to big 4-pin (for slim ODD)
98R1434000E	ACP-4340 fan kit for multi GPU card

Spare Parts

Part Number	Description
9662132020E	Black mobile HDD tray
1990021256T000	Door filter