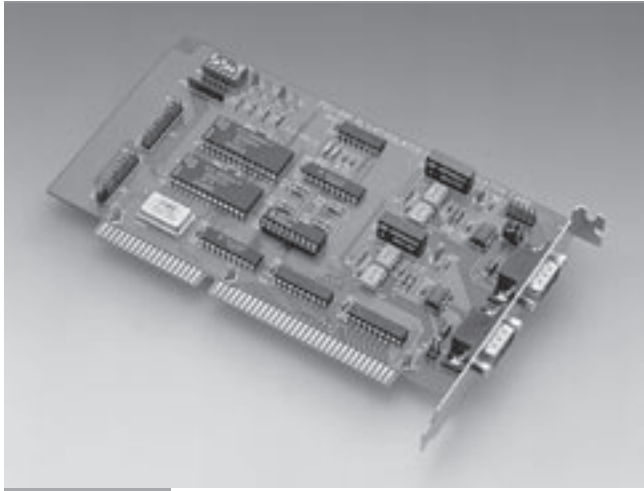


PCL-841

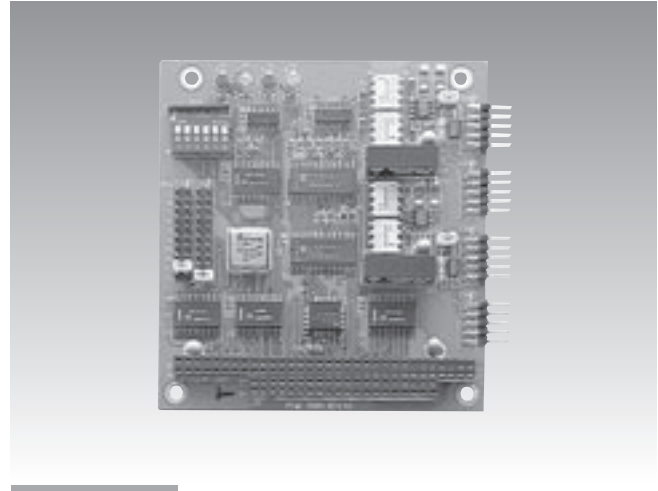
PCM-3680

Dual-port Isolated CAN-bus Interface ISA Card

Dual-port Isolated CAN Interface PC/104 Module



PCL-841



PCM-3680



Features

- Operates two separate CAN networks at the same time
- High speed transmission up to 500 kbps
- 16 MHz CAN controller frequency
- Optical isolation protection of 1000 V_{DC} ensures system reliability
- Wide IRQ selection for each port: IRQ 3, 4, 5, 6, 7, 9, 10, 11, 12, 15
- LEDs indicate Transmit/Receive status on each port
- Direct memory mapping enables very fast access to the CAN controllers
- Windows® DLL library and examples included
- Supports Windows® 95/98/2000/XP and Linux

Specifications

General

- **Card Interface** ISA
- **Certifications** CE
- **Connectors** 2 x DB9-M
- **Dimensions** 185 x 100 mm (7.3" x 3.9") (PCL-841)
- **Ports** 2
- **Power Consumption** +5 V @ 400 mA typical, 950 mA max.
- **Weight (Gross)** 0.6 kg (1.3 lb)

Communications

- **CAN Controller** SJA-1000
- **CAN Transceiver** 82C250
- **Protocol** CAN2.0 A/B
- **IRQ** 3, 4, 5, 6, 7, 9, 10, 11, 12 or 15
- **Memory Segment Base Address** From C800H to EF00H
- **Signal Support** CAN_H, CAN_L

Protection

- **Isolation Protection** 1,000 V_{DC}

Environment

- **Operating Temperature** 0 ~ 50° C (32 ~ 122° F)

Ordering Information

- **PCL-841-A** Dual-port Isolated CAN-bus Interface Card

Features

- Operates two separate CAN networks at the same time
- High speed transmission up to 500 kbps
- 16 MHz CAN controller frequency
- Optical isolation protection of 1000 V_{DC} ensures system reliability
- Wide IRQ selection for each port: IRQ 3, 4, 5, 6, 7, 9, 10, 11, 12, 15
- LEDs indicate Transmit/Receive status on each port
- Direct memory mapping enables very fast access to the CAN controllers
- Windows DLL library and examples included
- Supports Windows 95/98/2000/XP and Linux

Specifications

General

- **Card Interface** PC/104
- **Certifications** CE
- **Connectors** 2 x DB9-M w/cable
- **Dimensions** 90 x 96 mm (3.6" x 3.8")
- **Ports** 2
- **Power Consumption** +5 V @ 400 mA

Communications

- **CAN Controller** SJA-1000
- **CAN Transceiver** 82C250
- **Protocol** CAN2.0 A/B
- **IRQ** 3, 4, 5, 6, 7, 9, 10, 11, 12 or 15
- **Memory Segment Base Address** From C800H to EF00H
- **Signal Support** CAN_H, CAN_L

Protection

- **Isolation Protection** 1,000 V_{DC}

Environment

- **Operating Temperature** 0 ~ 65° C (32 ~ 122° F)

Ordering Information

- **PCM-3680-A** Dual-port Isolated CAN Interface Module